	<b>DOCUMENT FORM BORESCOPE INSPECTION FORM</b>	Page   1

Engine Borescope Inspection			
Job No: WO/076-SNK/IV/2022			
<u>Engine Serial Number</u>	<u>Date</u>	<u>Base / Location</u>	<u>Aircraft Registration</u>
PCE-PC2327	30 APRIL 2022	NABIRE	PK-SNK
<u>Aircraft Total Time</u>	<u>Aircraft Total Cycle</u>	<u>Reason For Borescope</u>	
3568:07 Hours	5171 Cycle	400 HOURS INSPECTION	

**Note:**

Record any discrepancies found during inspection, and/or take photographic evidence.

If None, then write No Findings. If you find defects, please quote EMM (Engine Maintenance Manual) Reference and Limitations.





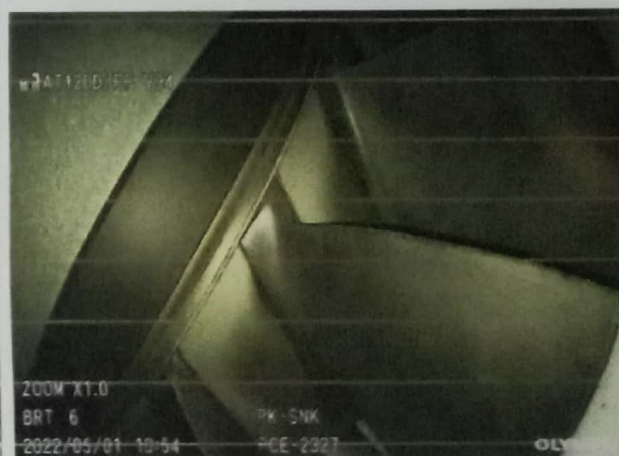
Item	Work Description	SIGN	STAMP
1	Remove fuel manifold adapter as necessary (Ref. 73-10-05).		
2	Perform inspection of the First Stage Compressor. Defects:  <b>EROSION AT LEADING EDGE WITHIN LIMITATION</b>  <u>If defects found, quote MM Limitation and References:</u> <b>PT6A-114A EMM 72-30-05 Para. 5.C &amp; 5.D (Acceptable Conditions, Repair Unnecessary)</b>		

Photo of First Stage Compressor 1<sup>st</sup> Quadrant



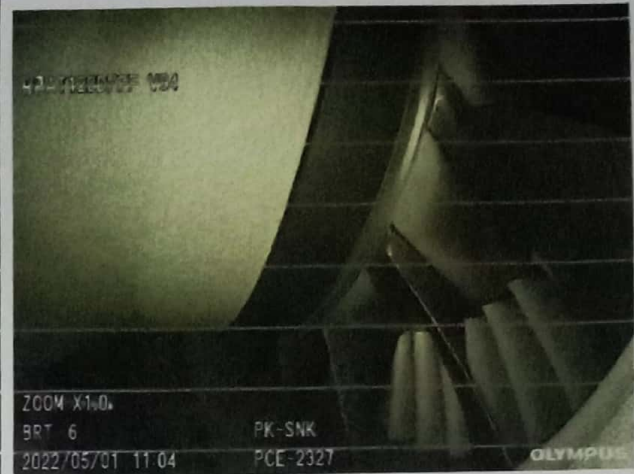
Photo of First Stage Compressor 2<sup>nd</sup> Quadrant



**Photo of First Stage Compressor 3<sup>rd</sup> Quadrant**



**Photo of First Stage Compressor 4<sup>th</sup> Quadrant**



3

Perform inspection of Combustion Chamber Liner Assembly.  
Defects:

**Localized Burning and Carbon build up of the Cooling Ring**

If defects found, quote MM Limitation and References:

**PT6A-114A EMM 72-40-01 Para. 6.B (Acceptable Conditions, Repair Unnecessary)**

SIGN

STAMP




**Photo of Combustion Chamber 1<sup>st</sup> Quadrant**



**Photo of Combustion Chamber 2<sup>nd</sup> Quadrant**







# DOCUMENT FORM BORESCOPE INSPECTION FORM

Page | 3

Photo of Combustion Chamber 3<sup>rd</sup> Quadrant

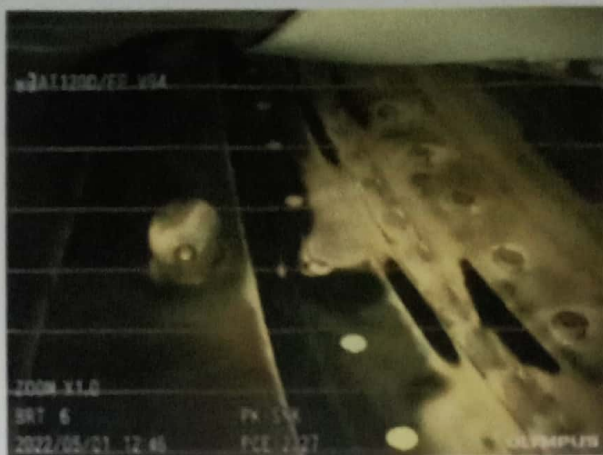


Photo of Combustion Chamber 4<sup>th</sup> Quadrant



4

Perform Inspection of CT-Stator assembly.

Defects:

**RESULT FOUND NO DEFECT**

If defects found, quote MM Limitation and References:

SIGN

STAMP

*[Signature]*



Photo of CT Stator 1<sup>st</sup> Quadrant



Photo of CT Stator 2<sup>nd</sup> Quadrant





# DOCUMENT FORM BORESCOPE INSPECTION FORM

Page | 4

Photo of CT Stator 3<sup>rd</sup> Quadrant

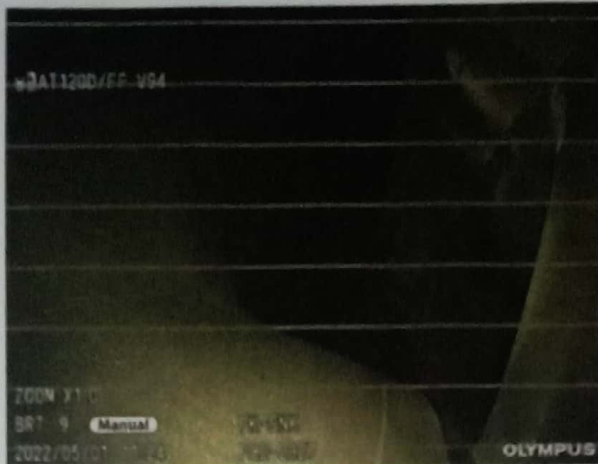
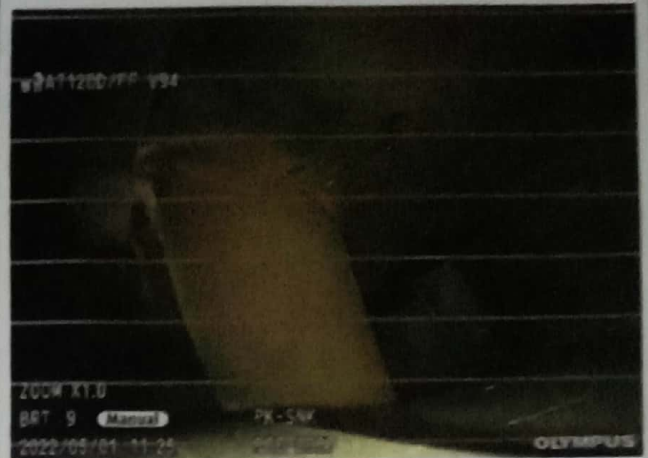


Photo of CT Stator 4<sup>th</sup> Quadrant



5

Perform inspection of CT-Blades and shroud segments.

Defects:

**RESULT FOUND NO DEFECT**

If defects found, quote MM Limitation and References:

SIGN

STAMP

*[Signature]*



Photo of Leading Edge CT-Blades 1<sup>st</sup> Quadrant



Photo of Leading Edge CT-Blades 2<sup>nd</sup> Q





Photo of Leading Edge CT-Blades 3<sup>rd</sup> Quadrant

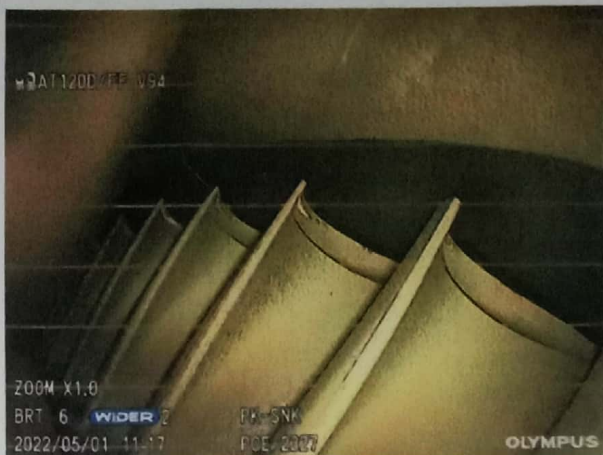
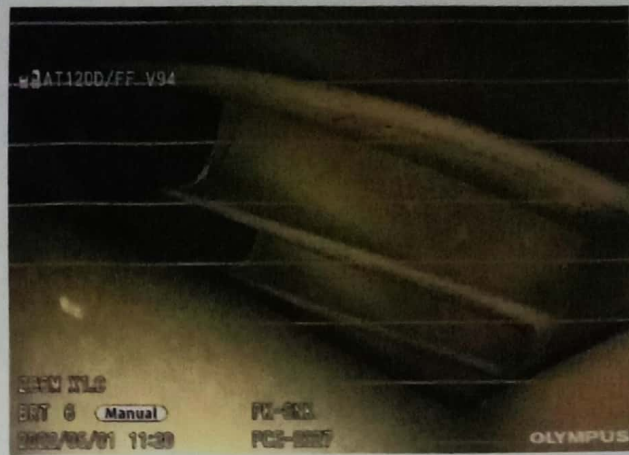


Photo of Leading Edge CT-Blades 4<sup>th</sup> Quadrant



Perform inspection CT-Blades Trailing Edge Defects:

6

**FOUND SCRATCH ON SHROUD SEGMENT**

If defects found, quote MM Limitation and References:

**PT6A-114A EMM, 72-50-02, Para.6A (Acceptable Damage Limit)**

SIGN

STAMP

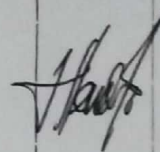
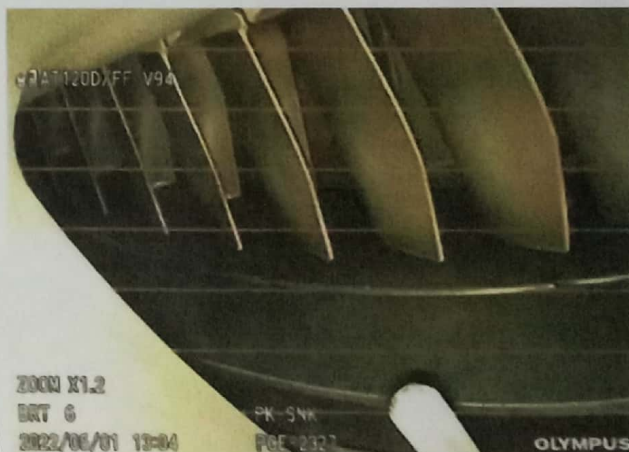



Photo of CT-Blades Trailing Edge1<sup>st</sup>



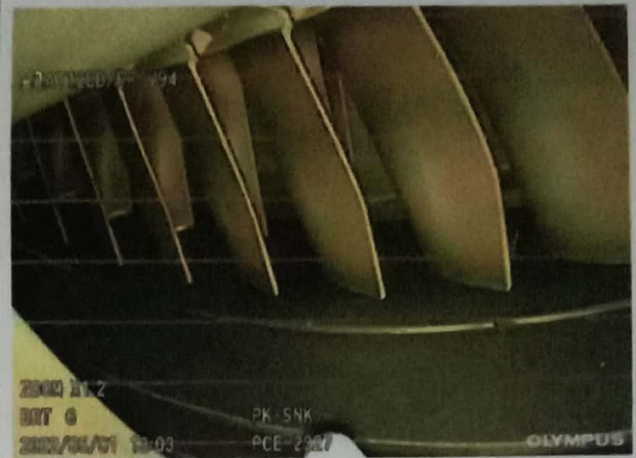
Photo of CT-Blades Trailing Edge2<sup>nd</sup> Q



**Photo of CT-Blades Trailing Edge 3<sup>rd</sup> Q**



**Photo of CT-Blades Trailing Edge 4<sup>th</sup> Q**



7

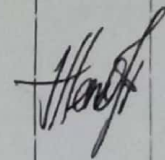
Perform inspection of PT-Blades  
Defects:

**RESULT FOUND NO DEFECT**

If defects found, quote MM Limitation and References:

SIGN

STAMP




**Photo of PT-Blades 1<sup>st</sup> Q**

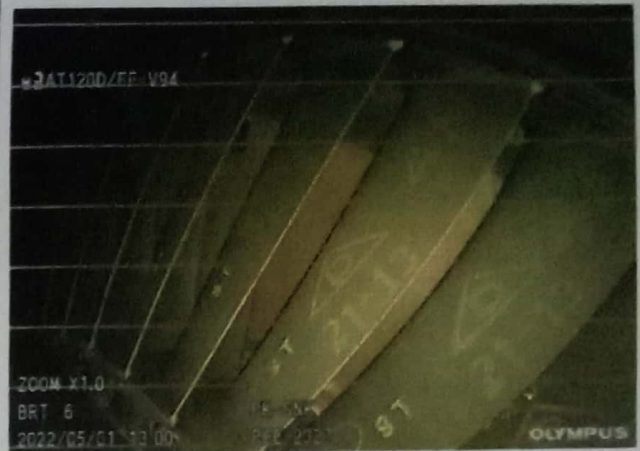


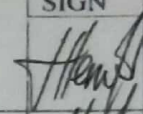
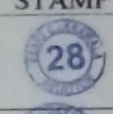
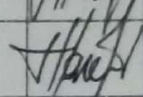
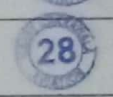
**Photo of PT-Blades 2<sup>nd</sup> Q**





Photo of PT-Blades 3<sup>rd</sup> O

Photo of PT-Blades 4<sup>th</sup> O


		SIGN	STAMP
8	Install fuel manifold adapter(s) (Ref. 73-10-05).		
9	Perform fuel leak check post fuel nozzle installation		

## BORESCOPE PERFORMED BY

Name: **HENDRO TRIYONO**

Signature :



Stamp :

